

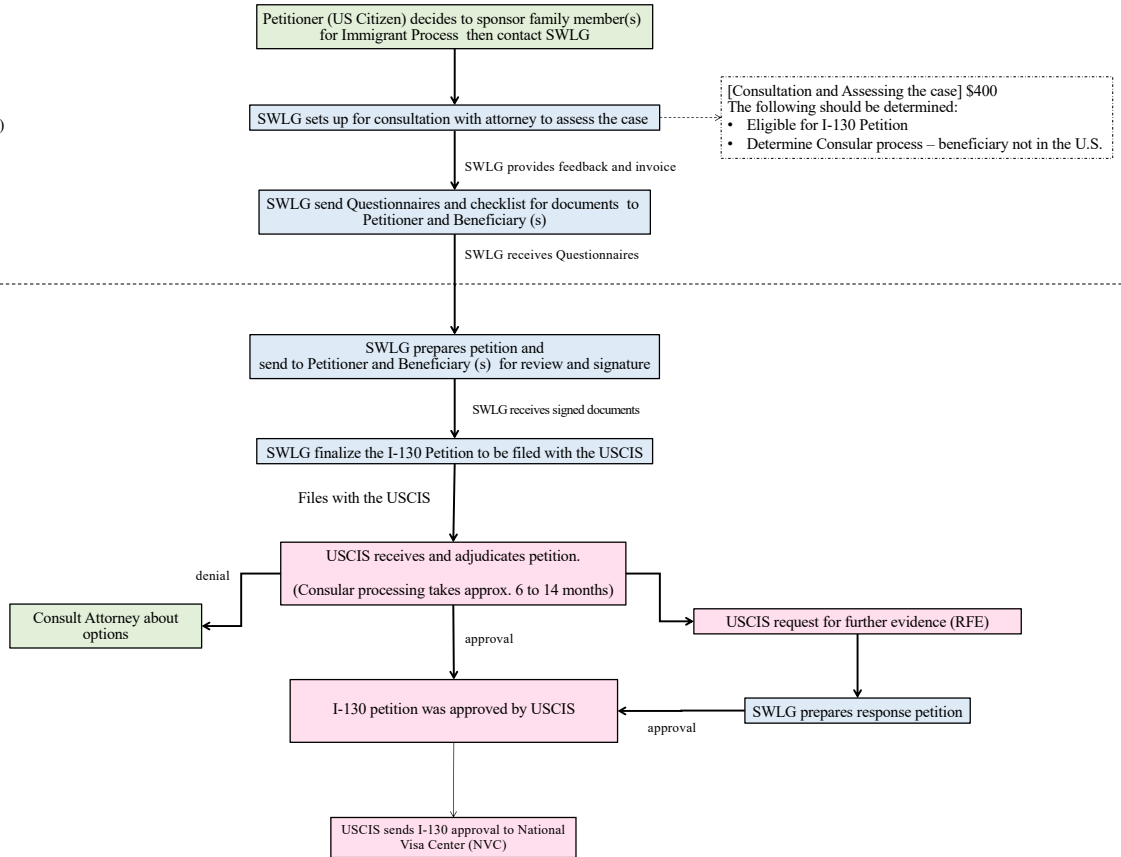
I-130 Consular Process (CP) Flow Chart

Step 1: Initial Case

SWLG: SW Law Group
USCIS: U.S. Citizenship and Immigration Services
NVC: National Visa Center

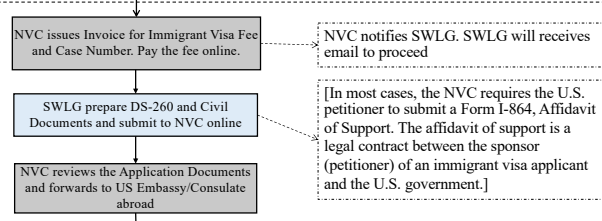
- Action by Petitioner/ Beneficiary(s)
- Action by SWLG
- Action by USCIS
- Action by US Embassy
- Action by NVC

Step 2: Submit I-130 Petition to USCIS Processed by USCIS



Step 3: Submit DS-260 Application to NVC online Processed by NVC

U.S. Embassy abroad



Step 4: Attend Embassy Interview Processed by US Embassy abroad

